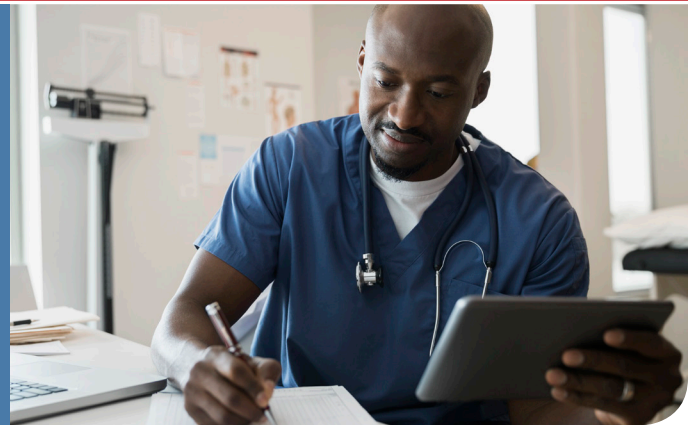




Bringing convenience, compassion and real clinical care to get injured employees back-to-work more quickly



## Berkley Southeast Insurance Group and Tele-Emergent Care

We understand the importance of responding quickly when an employee is injured on the job, whether the event requires emergency or non-emergency treatment.

**Our voluntary Tele-Emergent medicine care program for existing and new Workers' Compensation policyholders, provides injured employees immediate access to an emergency trained Physician in less than 5 minutes, without having to leave the work place.** Every workers' compensation event is triaged by a highly trained physician Board Certified in Emergency Medicine, who can advise, prescribe and refer, and is available 24/7/365 through our partnership with MedCall Healthcare Advisors, LLC.

### Benefits of our Tele-Emergent Care Program

#### “Call a Doctor First”

- Med-Call Advisors maintains the nation’s largest Emergency Medical Practice
- Global 24/7/365 access via smart phone
- Real clinical care provided by Board Certified ER Physicians who make medical decisions that are in the best interest of the injured worker - potentially providing better outcomes
- Call Center staffed by medical professionals who document the event in real time
- Events accurately memorialized removing the burden of employers to recreate events
- Eliminates avoidable ER and Urgent Care visits
- Free Physician follow up for injured employee for up to 7 days
- Controls your medical costs potentially improving your E-mod
- Professional Registered Nurses follow up with employer and employee to assess future needs
- Assistance in early return to work when available, helps to improve overall workplace morale
- Bi-lingual Services available

Of 6.5 million ER visits, 66% were classified as avoidable!

\*According to a Truven study. Source: United Healthcare Opinion Research

### Want to Know More?

Contact your Territory Manager or...

**Chris Calloway** | WC Claims Director  
ccalloway@berkleysig.com

**Scott Jurek** | VP Chief Claim Officer  
sjurek@berkleysig.com



Your Back-in-Business Insurance Company®  
[berkleysig.com](http://berkleysig.com)

Acadia Insurance Company • Continental Western Insurance Company • Firemen’s Insurance Company of Washington, D.C.  
Tri-State Company of Minnesota • Union Insurance Company

Berkley Southeast Insurance Group is a member company of W. R. Berkley Corporation, a Fortune 500 Company, whose insurance company subsidiaries are rated A+ (Superior) by A.M. Best.

Products and services are provided by one or more insurance company subsidiaries of W. R. Berkley Corporation. Not all products and services are available in every jurisdiction, and the precise coverage afforded by any insurer is subject to the actual terms and conditions of the policies as issued.

© 2018 Berkley Southeast Insurance Group. All rights reserved.

